



Date: February 20, 2009

To: Mark Cotter, Director of Public Works
Mike Cooper, Director of Planning and Building Services
Jeff Schmitt, Assistant Director of Planning and Building Services
Paul Fick, Paul Fick Homes
Michael Runge, Runge Enterprises
Rich Schwanke, JSA Engineering
Steve Brockmueller, Heartland Engineering
Eric Berg, MidAmerican Energy
Erin Hayes, Midcontinent Communications
Mark Vellinga, Graham Organization
Steve Van Buskirk, Van Buskirk Companies, Incorporated
Pat Beckman, Beckman Realty & Development
Orrin Oliver, Oliver Excavating

From: Chad J. Huwe, City Engineer

Subject: INFRASTRUCTURE REVIEW ADVISORY BOARD (IRAB) MEETING

IRAB will meet on **Wednesday, February 25, 2009 at 8:30 a.m., at the Water Purification Plant, 2100 N. Minnesota Ave.**

AGENDA

1. Business

- a. East Side Sanitary Sewer System Cost Recovery (Informational)

cc: Mayor Munson
Clerk of Records
Cindy Sheehan, Home Builders Association

NOTE: If you or your alternate are unable to attend this meeting, please call Julie Wilson at 367-8606 or e-mail at wilson@siouxfalls.org as soon as possible.

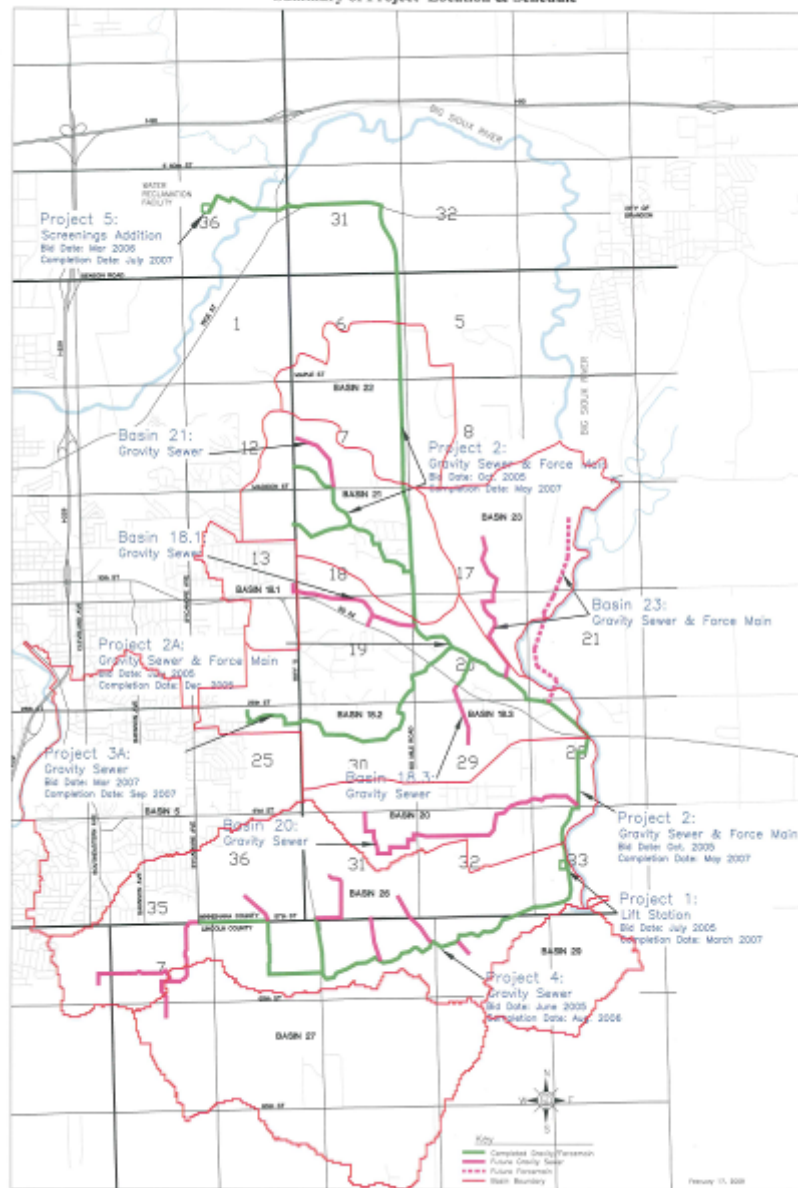
Sioux Falls Eastside Sanitary Sewer System Cost Recovery IRAB Up-date



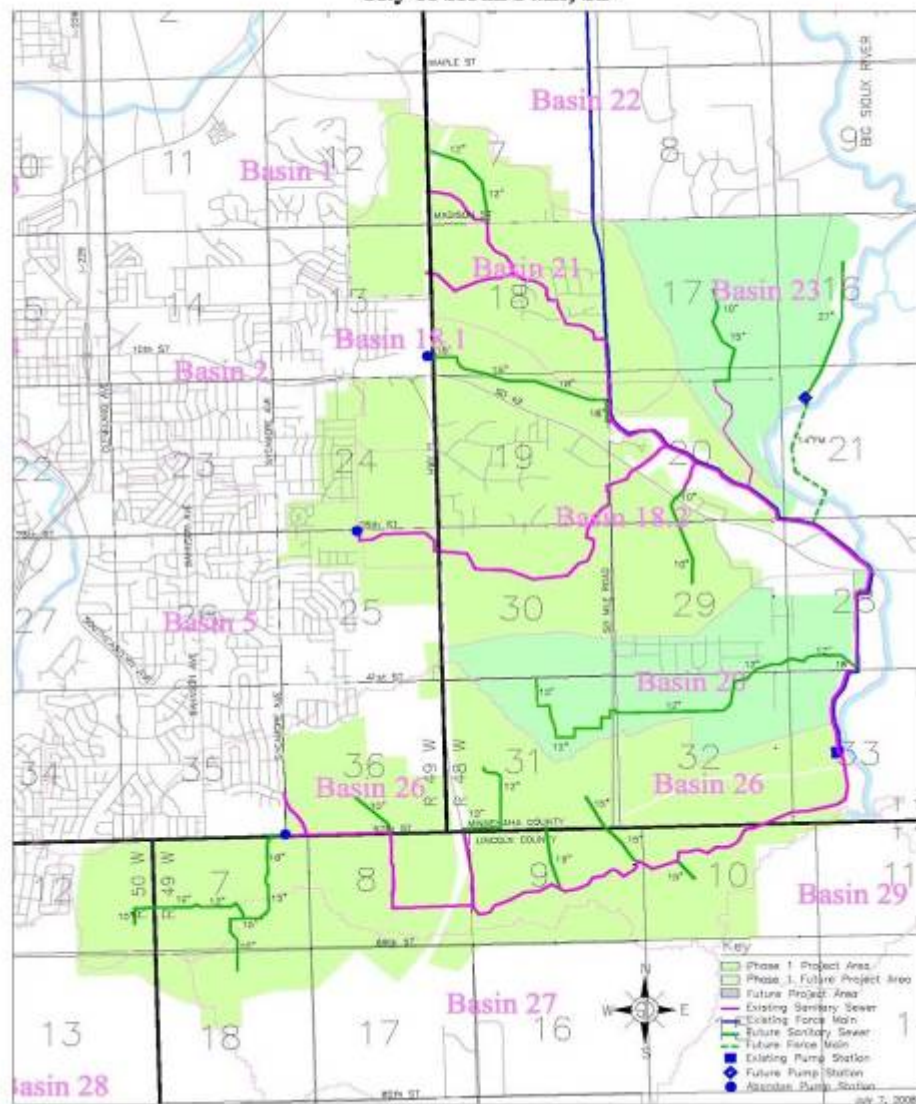
February 25, 2009



**Eastside Sanitary Sewer System - Phase I
Summary of Project Location & Schedule**



**Eastside Sanitary Sewer System - Phase I
City of Sioux Falls, SD**



Cost Recovery Alternative Assumptions

- Basin Areas estimated by CADD, not by specific parcel addition
- Number of rural residents adjusted by ratio over entire ESSS area.
 - Average Units/Total Area
 - Average Areas/Total Area
- BMP Pond areas and easement area reduction prorated over entire ESSS Cost Recovery Area.



Basin 23 Alternative Description

- Basin 23 includes two sub-basins
- Total Basin Area: 791 acres
- Bordered on North: Madison (Brandon Service Area)
- Bordered on East: Big Sioux River
- Bordered on South: Willow Run Golf Course

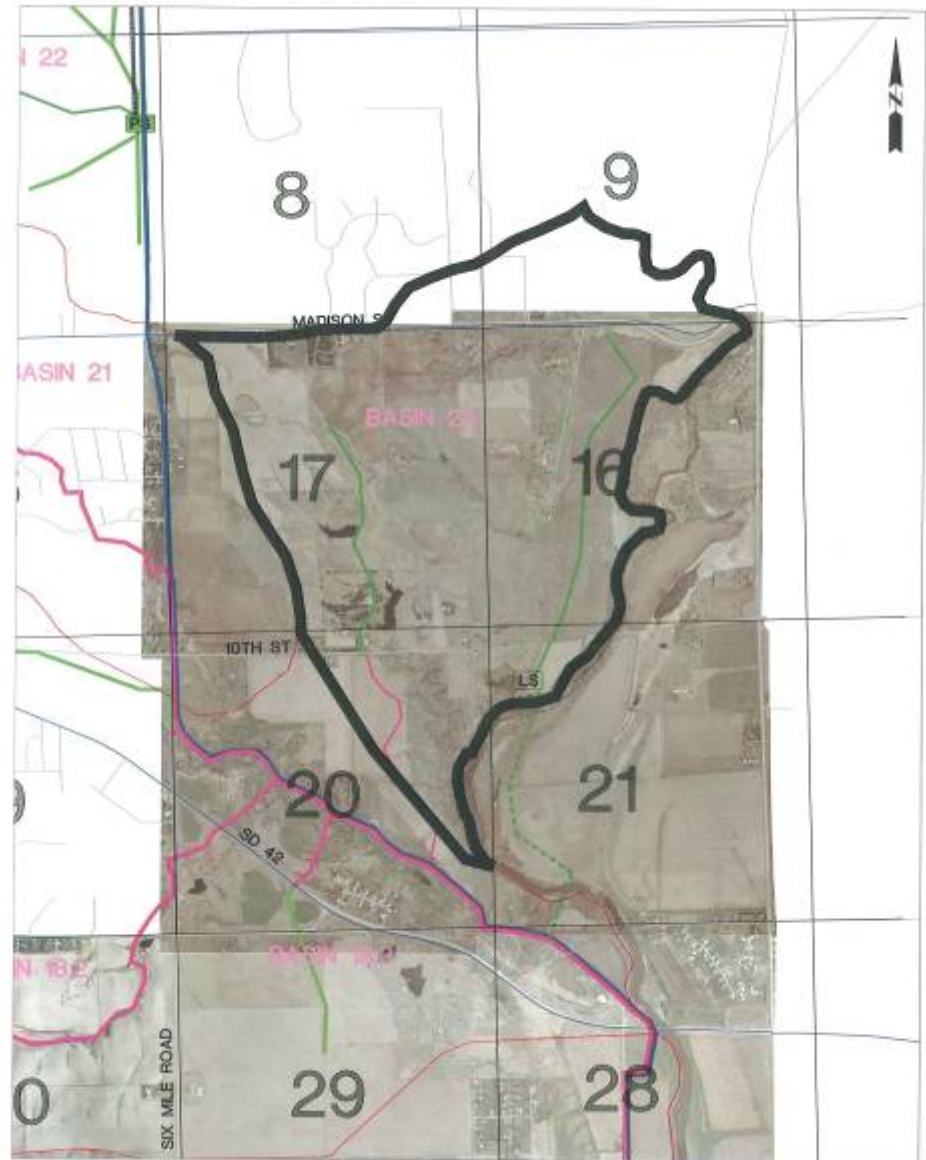


Basin 23 Alternative Description

- Geographical constraints require pumping for a portion of Basin 23
 - Area served by pump station: 465 acres



Basin 23

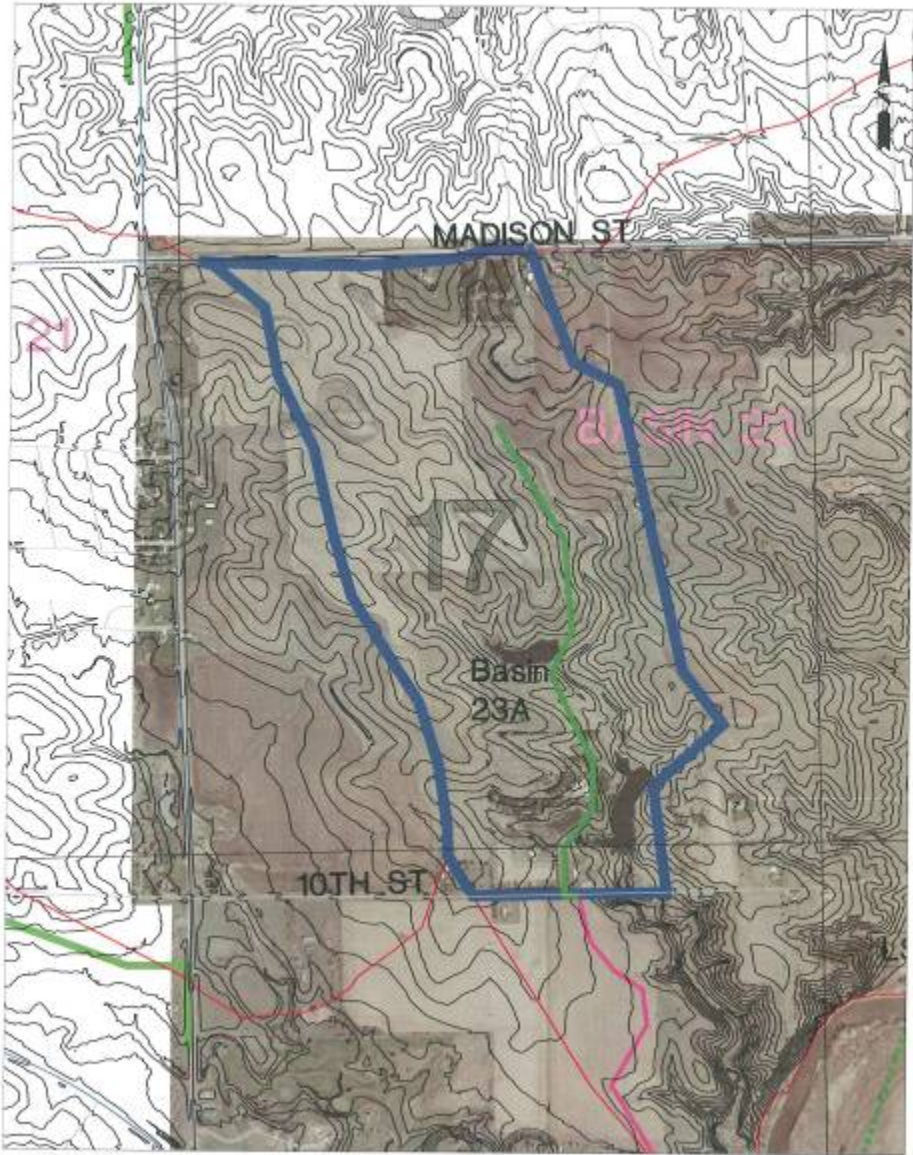


Basin 23 Proposed Lift Station, Force Main, and Gravity Sewer

SCALE 1:2000



Basin 23a

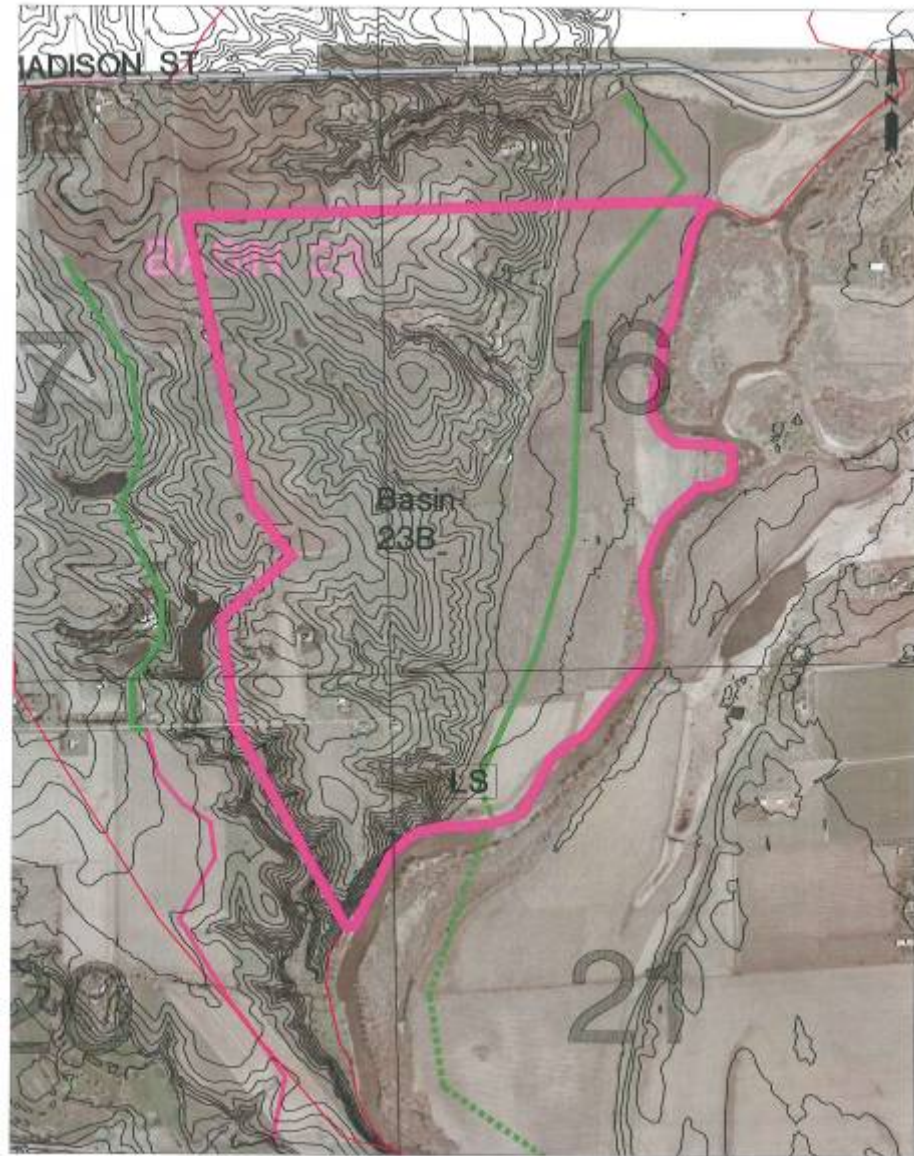


Basin 23 - Subbasin 23A - Gravity Sewer

SCALE 1:1000



Basin 23b



Basin 23 - Subbasin 23B - Lift Station & Forcemain

SCALE 1:1000

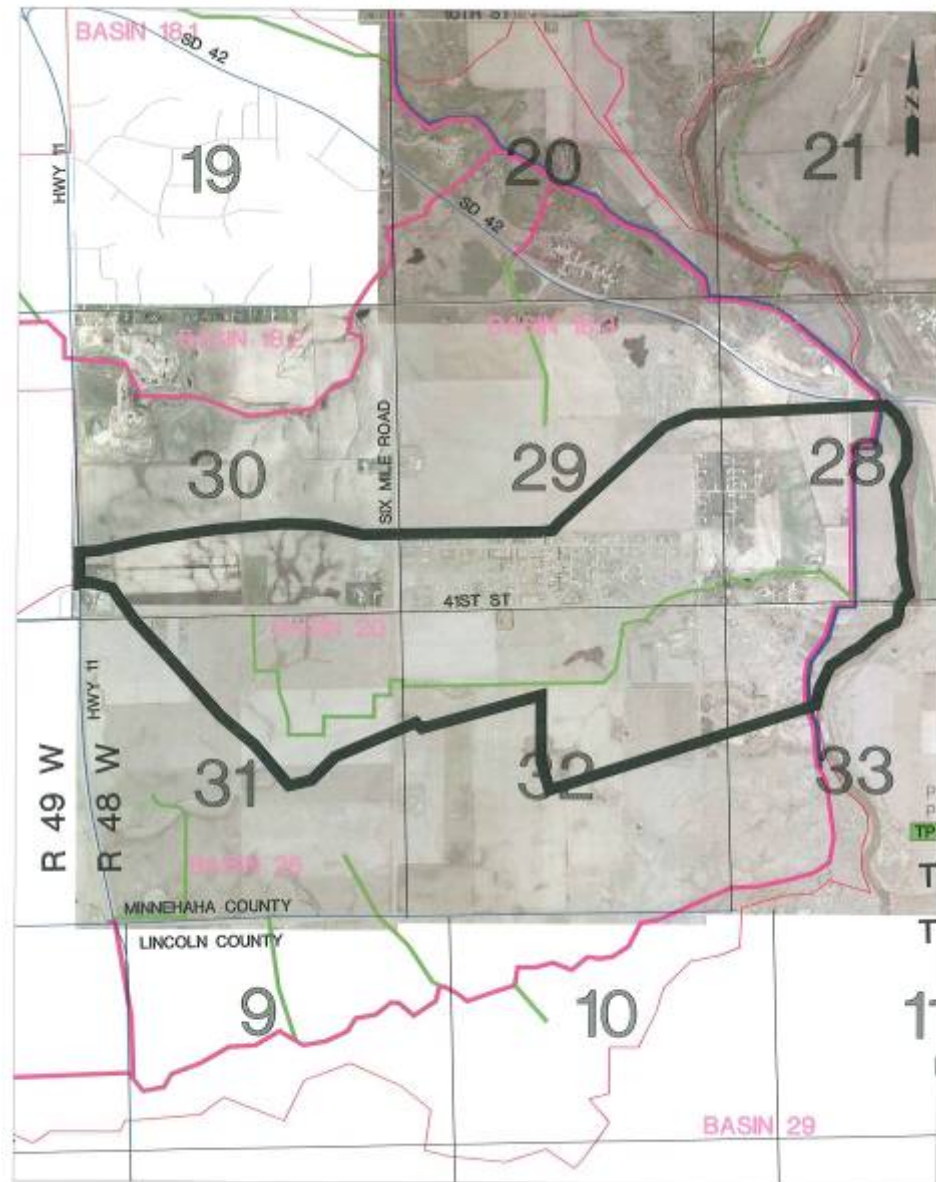


Basin 20 Alternative Description

- Area adjacent to 41st Street from Highway 11 east to Big Sioux River
- Service Area: 1269 acres
- Currently in design



Basin 20



Basin 20 PROPOSED GRAVITY SEWER

SCALE 1:2000

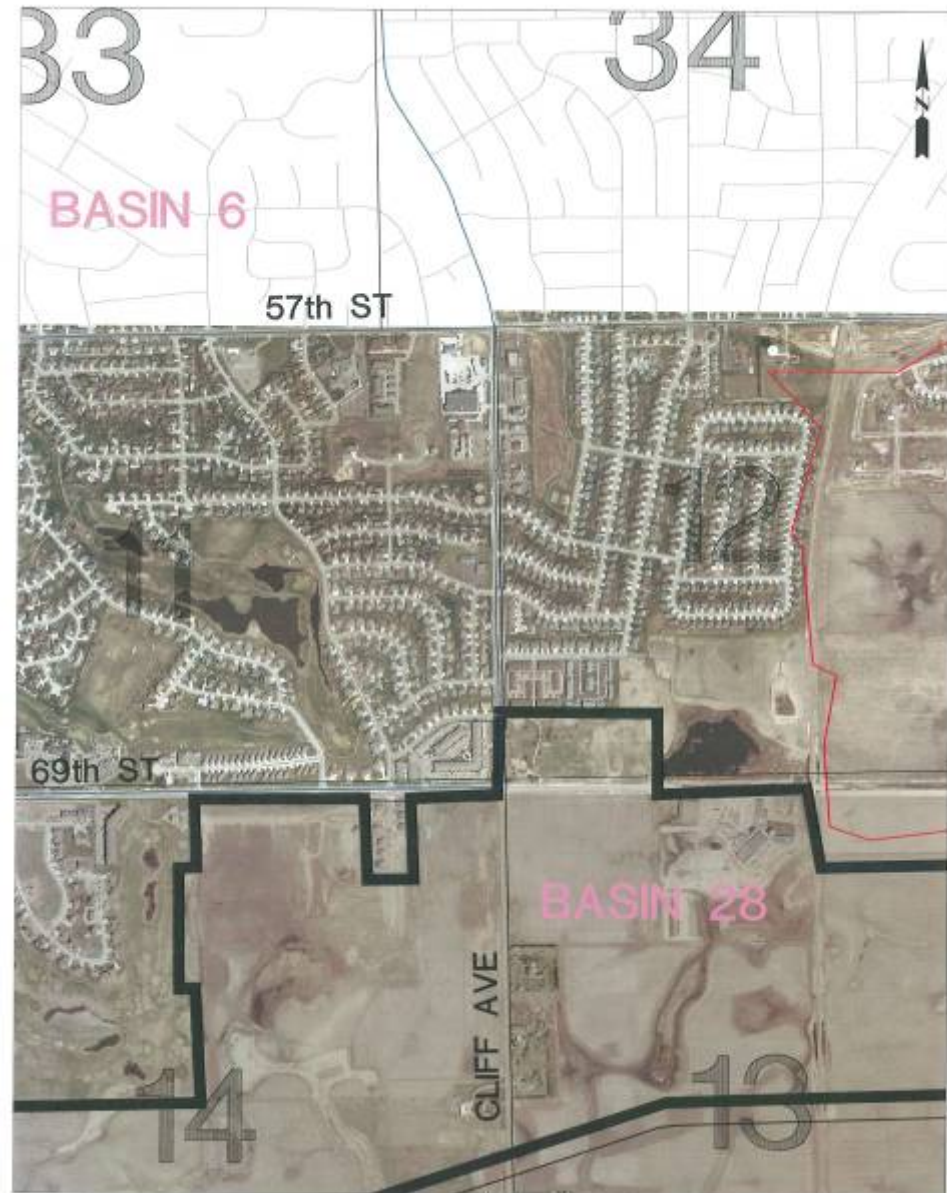


Basin 28 Alternative Description

- Area located southwest of 69th and Cliff
- Service Area: 704 acres



Basin 28



Basin 28 - Dunham Lift Station

SCALE 1:1000



Alternative Combinations

Description	Area Adjustment (Acres)
Basin 23	(791)
Basin 23, PS Area Only	(465)
Basins 23 and 20	(2,060)
Basin 23 PS Area and 20	(1733)
Basin 20	(1269)
Add Basin 28	704
Add Basin 28, Eliminate Basin 23	(87)
Add Basin 28, Eliminate Basin 23 PS	239.50
Add Basin 28, Eliminate Basin 23 & 20	(1356)
Add Basin 28, Eliminate Basin 23 PS and 20	(1029)
Add Basin 28, Eliminate Basin 20	565



Alternatives Cost Summary

Table 1

Item Description	Current Cost Recovery	Eliminate Basin 23 Completely	Eliminate Basin 23, Pump Station Area	Eliminate Basins 23 and 20 Completely
Adjusted Acres for Alternatives	0.00	(791.00)	(464.50)	(2,060.00)
Total Adjusted Cost Recovery Area	9,191.50	8,428.66	8,743.54	7,204.84
Total Rural Residential	\$1,864.29	\$1,630.53	\$1,662.92	\$1,766.68
Constructed Cost Recovery total	\$29,950,228	\$29,962,955	\$29,955,977	\$30,025,400
Future cost recovery total	\$14,981,561	\$6,312,687	\$8,310,542	\$4,067,753
total Cost Recovery total	\$44,931,790	\$36,275,641	\$38,266,519	\$34,093,154
Constructed Cost Recovery (Cost Per Acre)	\$3,532.82	\$3,850.36	\$3,713.09	\$4,484.66
Future cost recovery total (Cost per Acre)	\$1,767.17	\$811.21	\$1,030.10	\$607.57
total Cost Recovery total (cost Per Acre)	\$5,299.99	\$4,661.57	\$4,743.20	\$5,092.23



Alternatives Cost Summary Table 2

Item Description	Eliminate Basin 23 PS area and Basin 20	Eliminate Basin 20 Completely	Add Basin 28
Adjusted Acres for Alternatives	(1,733.50)	(1,269.00)	704.00
Total Adjusted Cost Recovery Area	7,519.71	7,967.68	9,870.44
Total Rural Residential	\$1,798.67	\$2,021.52	\$1,748.98
Constructed Cost Recovery total	\$30,002,449	\$29,978,790	\$30,069,422
Future cost recovery total	\$6,067,071	\$12,741,265	\$14,980,722
total Cost Recovery total	\$36,069,520	\$42,720,055	\$45,050,143
Constructed Cost Recovery (Cost Per Acre)	\$4,304.22	\$4,069.02	\$3,302.25
Future cost recovery total (Cost per Acre)	\$870.40	\$1,729.37	\$1,645.20
total Cost Recovery total (cost Per Acre)	\$5,174.62	\$5,798.39	\$4,947.45



Alternatives Cost Summary Table 3

Item Description	Add Basin 28, eliminate Basin 23	Add Basin 28, eliminate Basin 23 PS Area	Add Basin 28, eliminate Basin 23 and 20	Add Basin 28, eliminate Basin 23 PS Area and Basin 20	Add Basin 28, eliminate Basin 20
Adjusted Acres for Alternatives	(87.00)	239.50	(1,356.00)	(1,029.50)	(565.00)
Total Adjusted Cost Recovery Area	9,107.60	9,422.47	7,883.77	8,198.65	8,646.61
Total Rural Residential	\$1,522.45	\$1,556.03	\$1,632.36	\$1,666.66	\$1,879.63
Constructed Cost Recovery total	\$30,071,862	\$30,069,705	\$30,103,538	\$30,090,883	\$30,078,747
Future cost recovery total	\$6,310,164	\$8,308,560	\$4,061,945	\$6,060,494	\$12,732,359
total Cost Recovery total	\$36,382,026	\$38,378,265	\$34,165,483	\$36,151,377	\$42,811,106
Constructed Cost Recovery (Cost Per Acre)	\$3,579.72	\$3,460.05	\$4,127.87	\$3,972.66	\$3,769.52
Future cost recovery total (Cost per Acre)	\$751.15	\$956.05	\$556.98	\$800.12	\$1,595.64
total Cost Recovery total (cost Per Acre)	\$4,330.87	\$4,416.10	\$4,684.85	\$4,772.78	\$5,365.16

