

MINUTES
INFRASTRUCTURE REVIEW ADVISORY BOARD
OAK VIEW LIBRARY
May 6, 2015 8:30 a.m.

Members and Alternates Present

Chad Huwe, Jeff Schmitt, Preston Mettler, Jason Snyders, Phil Gundvaldson, Mark Anderson

Members and Alternates Absent

Mark Cotter, Mike Cooper, Steve VanBuskirk, Scott Hofer, Myron Adam, Tim Galbraith, Bill Kemmis, Mark Vellinga

Others Present

Ryan Johnson, Todd Anawski, Chad Stensland, Scott Vander Meulen, Kent Johnson, Chuck Point, Cynthia Monnin, Paul Korn, Andy Berg, Terry Adams, Jeff Dunn, Jerry Jongeling, Jeff Des Lauriers,

Approval of Minutes of Last Meeting

A motion by Schmitt to approve the April 1, 2015 meeting minutes was seconded by Gundvaldson. Roll Call: Yeses – Huwe, Schmitt, Mettler, Snyders, Gundvaldson, Anderson. Noes - none. Motion passed 6-0.

Announcements:

Chad Huwe, City of Sioux Falls, reminded the group there are several memberships that will be expiring in the near future. If someone wants to be considered for a position on the board, they need to complete an application. After the application is received, a recommendation is made to the Mayor, the Mayor makes a recommendation to the City Council, and the City Council approves the appointment.

Updates:

The arterial street and water distribution system platting fee nexus study, completed in 2008, is being reviewed by Duncan Associates, the firm who completed the original study. An update will be provided when the review is complete.

Business

a. Street Lighting Design and Construction

Jeff Dunn, City of Sioux Falls, discussed the design and layout of street lights systems in a subdivision. Please see attached PowerPoint.

Question: What is included in the cost to install a street light?

Answer: The materials and labor to install the system.

Question: Does the engineer designing the street light system need to be an electrical engineer?

Answer: No. The system can be designed by a civil engineer.

A committee will meet to discuss this further and then provide an update to the board.

b. Standard Detail - Sanitary Sewer Access Bench Adjacent to Drainageway

Ryan Johnson, City of Sioux Falls, stated the IRAB subcommittee group met to discuss proposed revisions. After some discussion, it was decided note 13 should read as follows; This standard

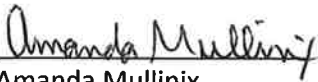
MINUTES
INFRASTRUCTURE REVIEW ADVISORY BOARD
OAK VIEW LIBRARY
May 6, 2015 8:30 a.m.

plate shall be used on sanitary sewer installations with construction plans approved after June 1, 2015.


Motion to approve the standard detail with note 13 revised as stated above made by Huwe, seconded by Mettler. Roll Call yeses – Huwe, Schmitt, Mettler, Snyders, Gundvaldson, Anderson. Noes – none. Motion passed 6-0.

Adjournment

The next IRAB meeting is scheduled for June 3, 2015 at 8:30 a.m., at the Oak View Library. Meeting adjourned at 9:35 a.m.



Amanda Mullinix
Secretary



Chad Huwe
Chair

Street Lighting Design

May 6th, 2015



City of Sioux Falls Light and Power

- Maintenance:
 - 4500 feet of Transmission Main (greater than 69 KV).
 - 93 miles of Distribution Main.
- In 2014, 165 street lights were installed (Private development) by the Light Division.
- The Light Division averages 10 hours/week coordinating with engineers/power providers, designing street lighting systems and generating costs estimates for new residential construction.
- This is all managed by 12 staff members.



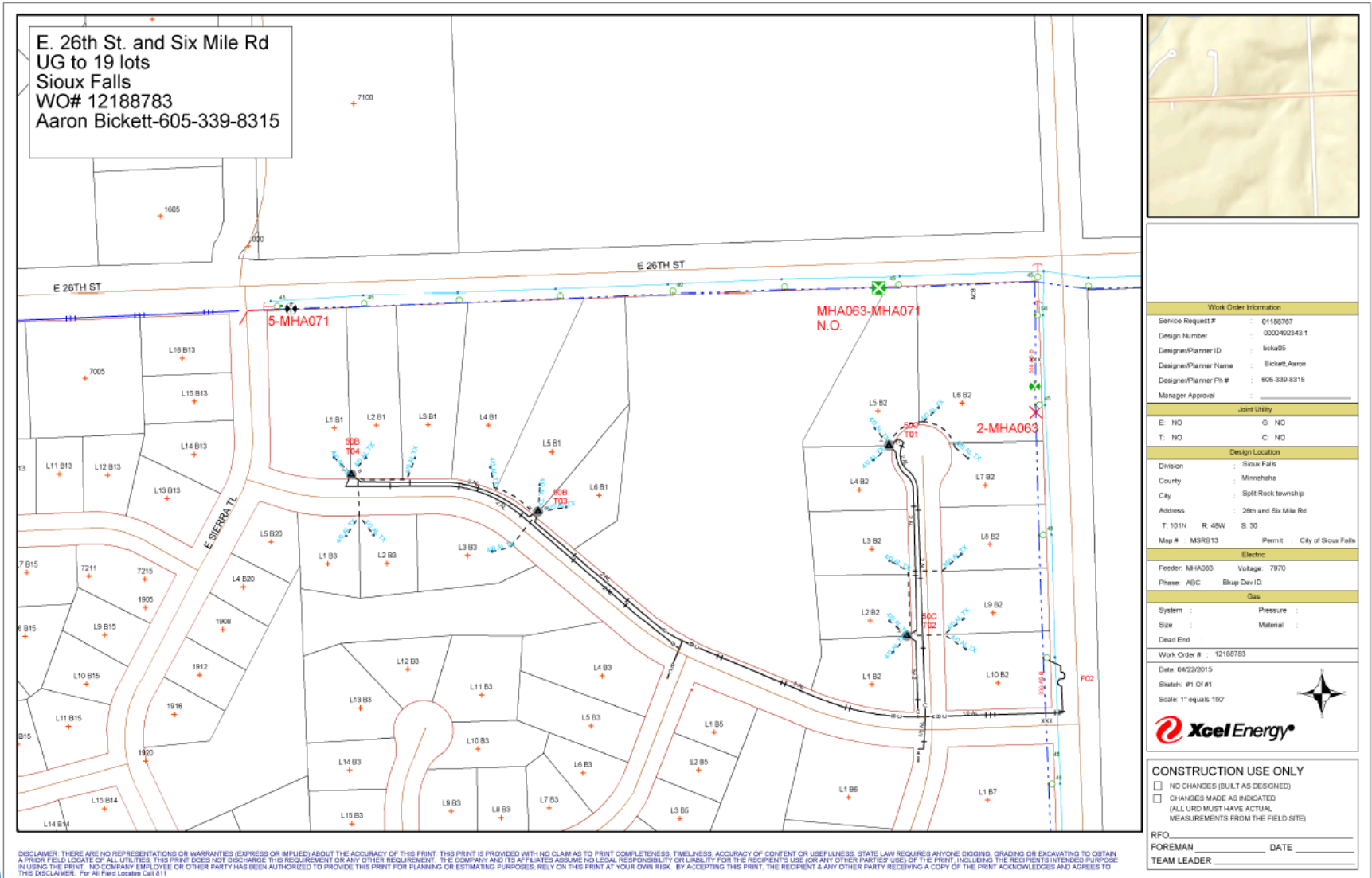
Light Division Challenges:

- Light Division must review, approve and install all street lighting systems associated with the construction of public streets.
- Many developers and engineers do not have experience with how these systems are designed and/or constructed.
- Difficult to coordinate light installations if site improvements are completed.

Development community has expressed interest in looking at ways to reduce time needed to install street lights.



Submittal to City Power by Xcel



Proposal:

Provide training to Developers and Consulting Engineers on design of street light systems.

How will this be a benefit?

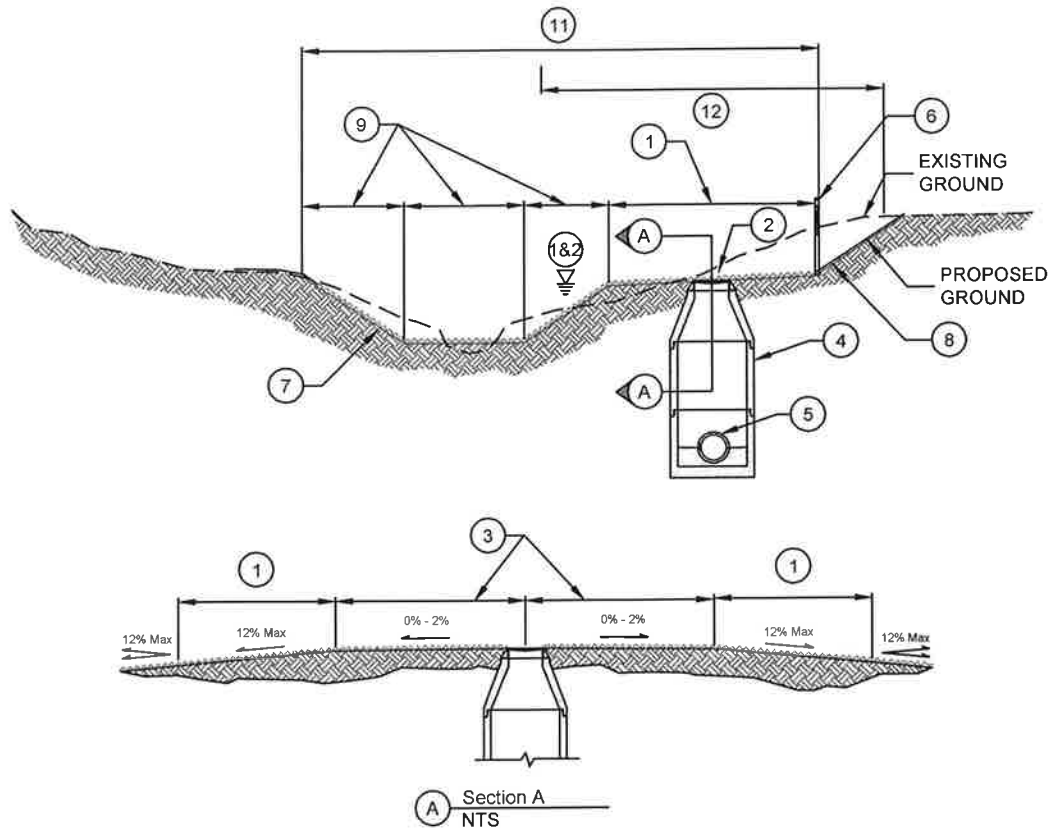
- Consulting Engineer knows the locations of the fire hydrants, inlets, sump lines relative to lighting systems.
- No design time by City; review for EDS compliance only. Reduce need to hire additional FTE to design street lighting systems.



Implementation Plan:

- Meet and discuss submittal requirements summer of 2015 with all stakeholders.
- Report back to IRAB on findings for feasibility moving forward.
- Ongoing process to work through unforeseen issues.





NOTES

1. ACCESS BENCH FOR SANITARY SEWER SHALL BE A MINIMUM OF 12 FEET WIDE, HAVE A MAXIMUM RUNNING SLOPE OF 12 PERCENT, A MINIMUM CROSS-SLOPE OF 2 PERCENT, A MAXIMUM CROSS-SLOPE OF 6 PERCENT, AND SHALL BE LOCATED ABOVE THE 10 PERCENT FLOOD ELEVATION.
2. SANITARY SEWER MANHOLE RIM SHALL BE 1 FOOT ABOVE THE 1 PERCENT FLOOD ELEVATION.
3. ACCESS BENCHES MUST BE SLOPED AWAY FROM THE MANHOLES WHEN APPLICABLE AND CONTAIN A 10 FOOT WIDE LANDING AREA IN BOTH DIRECTIONS (PARALLEL TO THE ACCESS BENCH) OF THE MANHOLE.
4. SANITARY SEWER MANHOLES SHALL BE PLACED BETWEEN THE CENTER AND UPHILL SIDE OF THE ACCESS BENCH.
5. SANITARY SEWER MAINS AND MANHOLES SHALL BE CENTERED ON THE ACCESS BENCH. UPON REQUEST AND APPROVAL, THE ACCESS BENCH MAY BE PLACED AWAY FROM THE SANITARY SEWER MAINS WITH AN ACCESS POINT PROVIDED TO ALL MANHOLES.
6. SANITARY SEWER MANHOLE MARKERS SHALL BE PLACED ON THE EDGE OF THE ACCESS BENCH ADJACENT TO THE MANHOLES.
7. CHANNEL SIDE SLOPE NOT TO EXCEED 4:1.
8. TIE-IN SLOPE TO MATCH EXISTING GRADE NOT TO EXCEED 4:1
9. CHANNEL WIDTH WILL VARY BASED ON HYDRAULIC DESIGN
10. RE-ESTABLISH VEGETATION PER THE ENGINEERING DESIGN STANDARDS.
11. STORM DRAINAGE EASEMENT WIDTH SHALL BE BASED ON THE WIDTH OF THE 1 PERCENT FLOOD.
12. SANITARY SEWER EASEMENTS MAY BE LOCATED IN THE STORM DRAINAGE EASEMENT. ADDITIONAL SANITARY SEWER ACCESS EASEMENTS SHALL BE PROVIDED IN A LOCATION ABOVE THE 10 PERCENT FLOOD ELEVATION TO ACCESS MANHOLES WHEN NECESSARY.
13. THIS STANDARD PLATE SHALL BE USED ON SANITARY SEWERS INSTALLED AFTER MAY 6, 2015

REVISED: MAY 6, 2015

SPECIFICATION
REFERENCE
NO.
SPECIAL



CITY OF SIOUX FALLS
ENGINEERING DIVISION
SANITARY SEWER ACCESS BENCH
PARALLEL TO DRAINAGE WAY

PLATE
NUMBER
SPECIAL