

Roadway Lighting

Design Policies

1.1 Furnishing and Installation Delegation

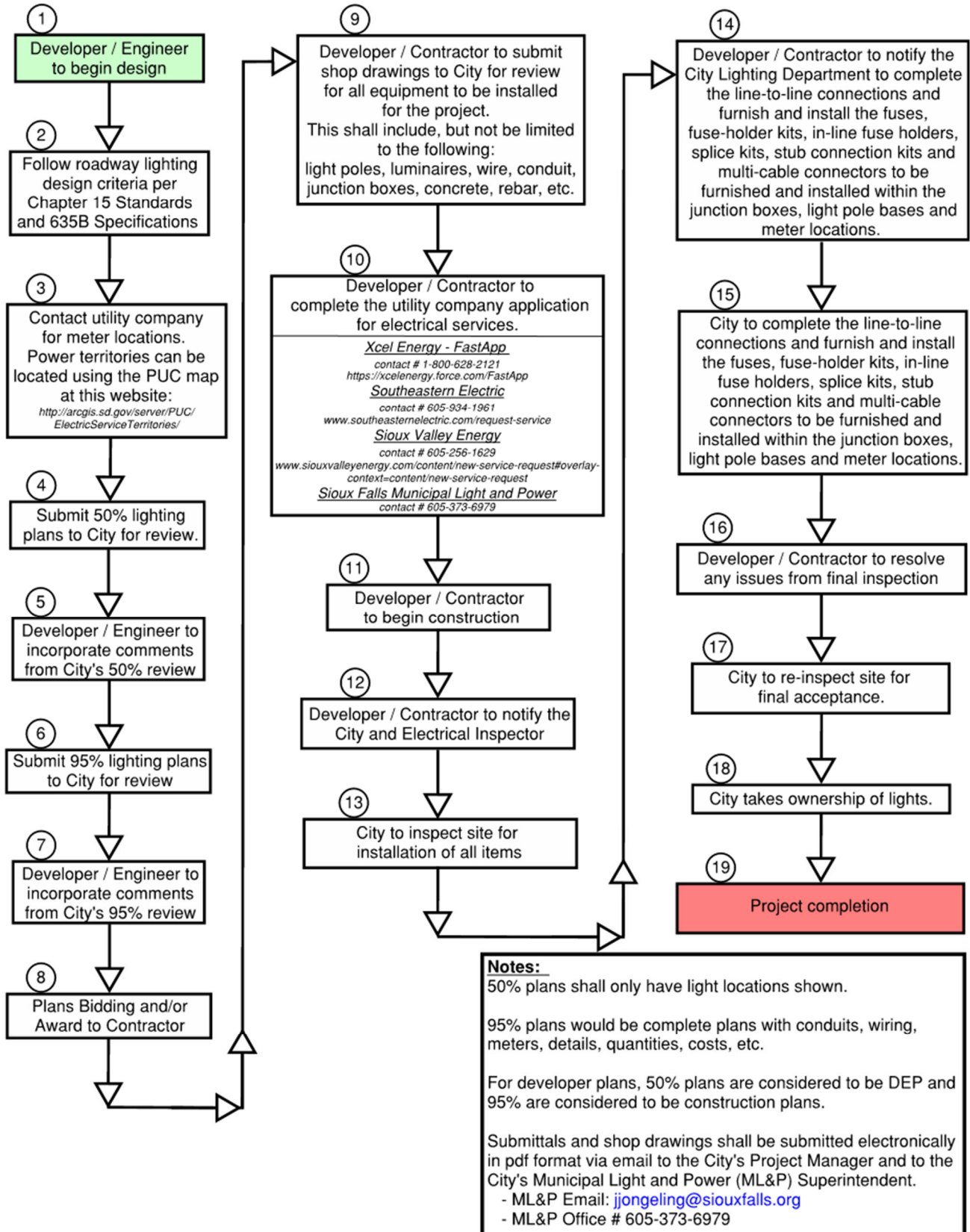
1.1.1 Materials for roadway lighting shall be furnished and installed as shown below.

Table 1-1: Roadway Lighting Material Furnish and Install Standard (Table is applicable to Developer and CIP projects)					
Material	City Furnish	Contractor Install	Contractor Furnish & Install	City Furnish & Install	Power Supplier
Local / Residential Roadway					
Meter Pedestal			X		
Meter					X
Conduit			X		
Wire in Conduit			X		
Junction Box			X		
Direct Bury Luminaire Pole	X	X			
LED Luminaire	X	X			
Locator Ball	X	X			
Fuses/Connectors for Wiring				X	
Commercial / Industrial, Minor/Major Collector Roadway or as directed by City					
Meter Pedestal			X		
Meter					X
Conduit			X		
Wire in Conduit			X		
Junction Box			X		
Concrete Footings			X		
Breakaway Bases			X		
Luminaire Pole			X		
LED Luminaire	X	X			
Locator Ball	X	X			
Fuses/Connectors for Wiring				X	
Arterial Roadway					
Meter Pedestal			X		
Meter					X
Conduit			X		
Wire in Conduit			X		
Junction Box			X		
Concrete Footings			X		
Breakaway Bases			X		
Luminaire Pole			X		
LED Luminaire			X		
Locator Ball	X	X			
Fuses/Connectors for Wiring				X	

1.2 Design and Construction Process

1.2.1 A flow chart is shown below that outlines the process of the roadway lighting from design through construction.

Figure 1-1: Roadway Lighting Flow Chart



1.3 Light designs for under bridge and tunnels (pedestrian underpasses)

1.3.1 Luminaires for under bridge and tunnels shall be as follows or approved equal.

Luminaire	Watts	Type	Manufacturer	Model #
Tunnel	53	4	Hubbell	WGH-110L-4K-U-M
	67	3	Holophane	W4PLED-30C-700-T3M
Under-Bridge (over local roadways)	50	3	Cooper Lumark	XTOR5A-WT
	72	3	Holophane	W4GLED-20C-1000-T3M
Under-Bridge (over collector and arterial roadways)	104	3	Holophane	W4GLED-30C-700-T3M

1.4 Meter Pedestals

1.4.1 The Contractor shall be responsible for completing the application process with the local power companies for the meter installation.

<u>Xcel Energy - FastApp</u> contact # 1-800-628-2121 https://xcelenergy.force.com/FastApp	<u>Southeastern Electric</u> contact # 605-934-1961 www.southeasternelectric.com/request-service	<u>Sioux Valley Energy</u> contact # 605-256-1629 https://www.siouxvalleyenergy.com/forms/new-service-request	<u>Sioux Falls Municipal Light and Power</u> contact # 605-373-6979
--	---	--	---